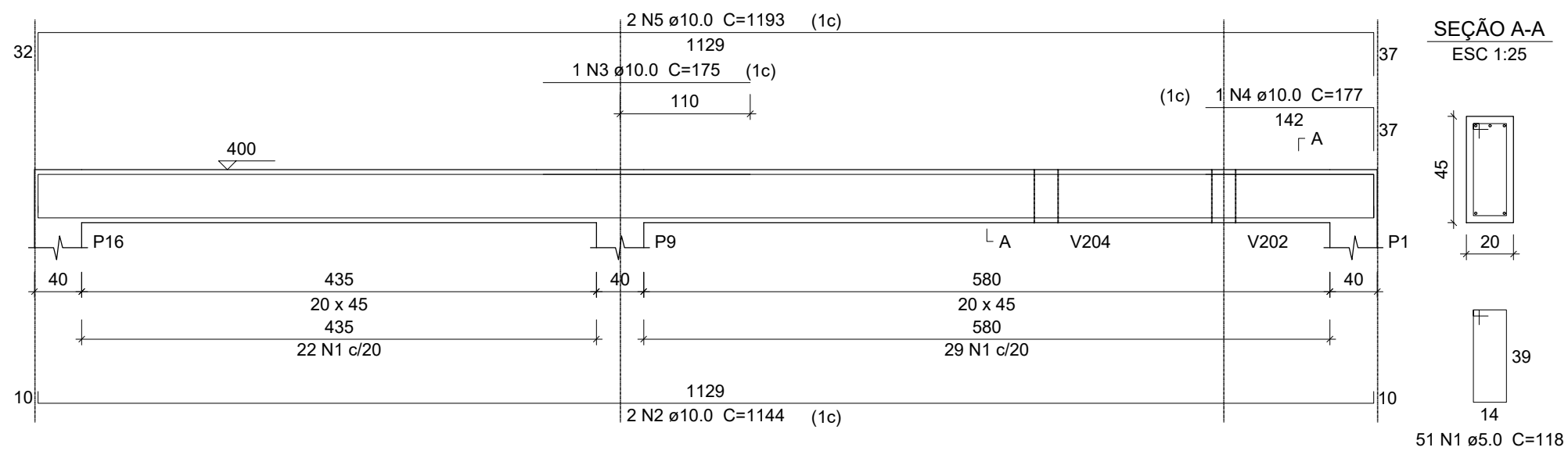
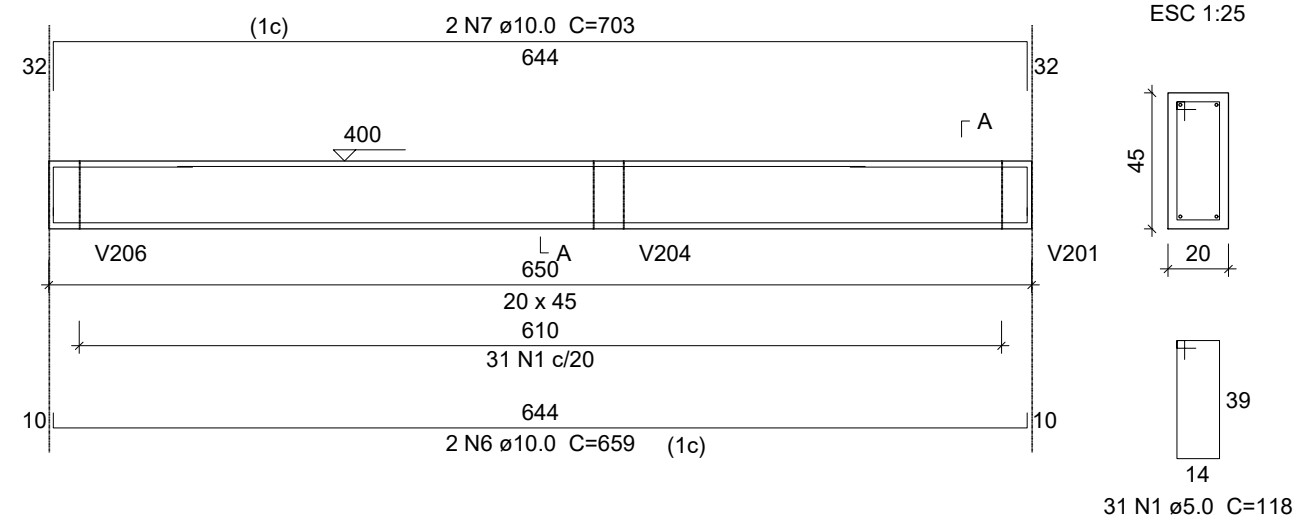


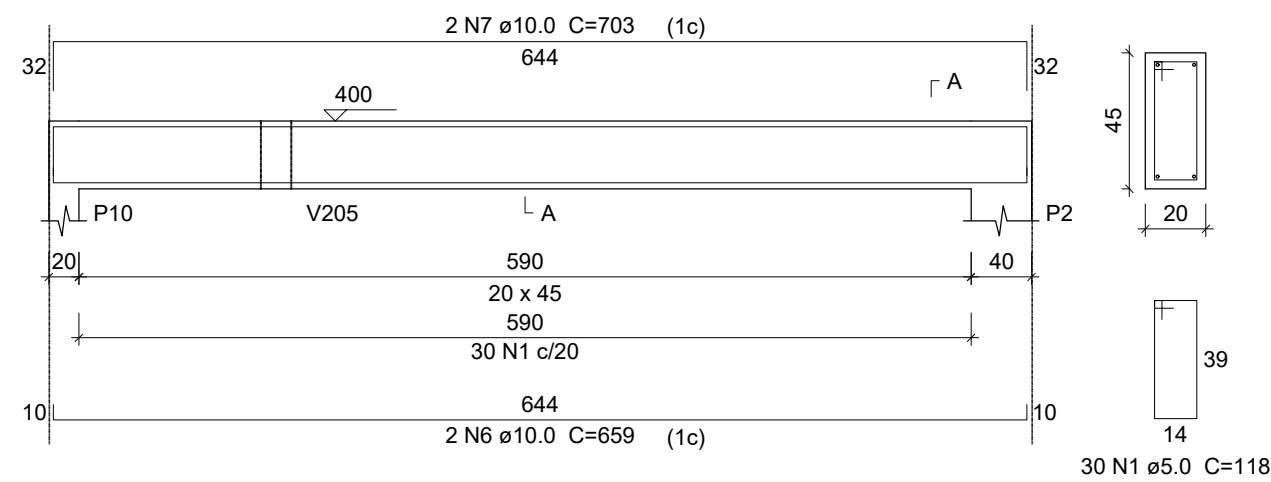
V210
ESC 1:50



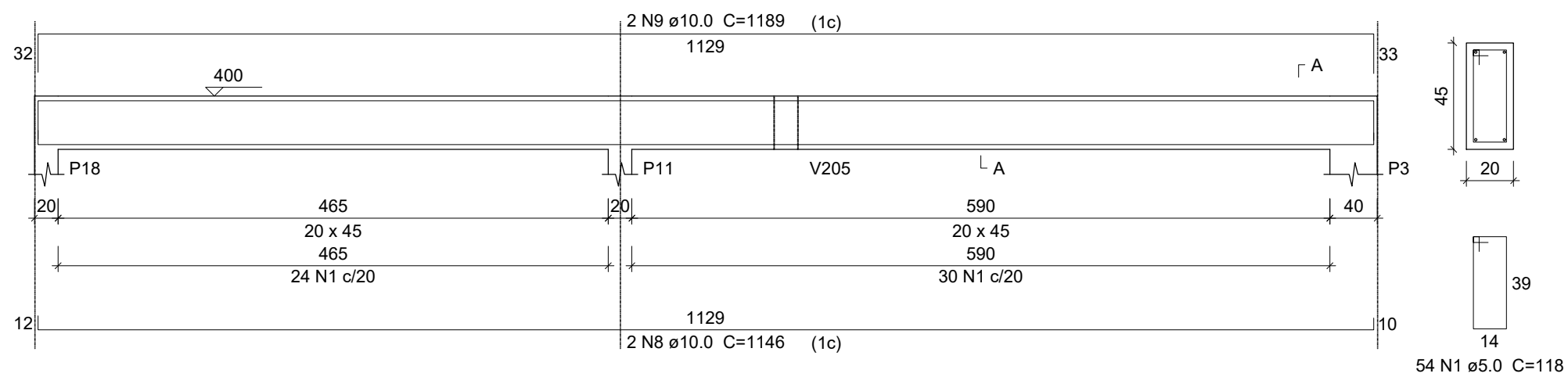
V211
ESC 1:50



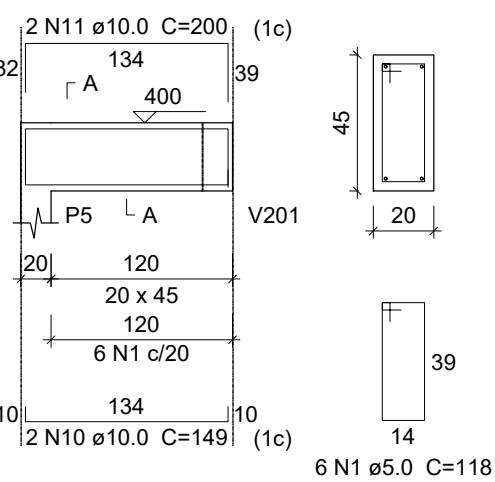
V212
ESC 1:50



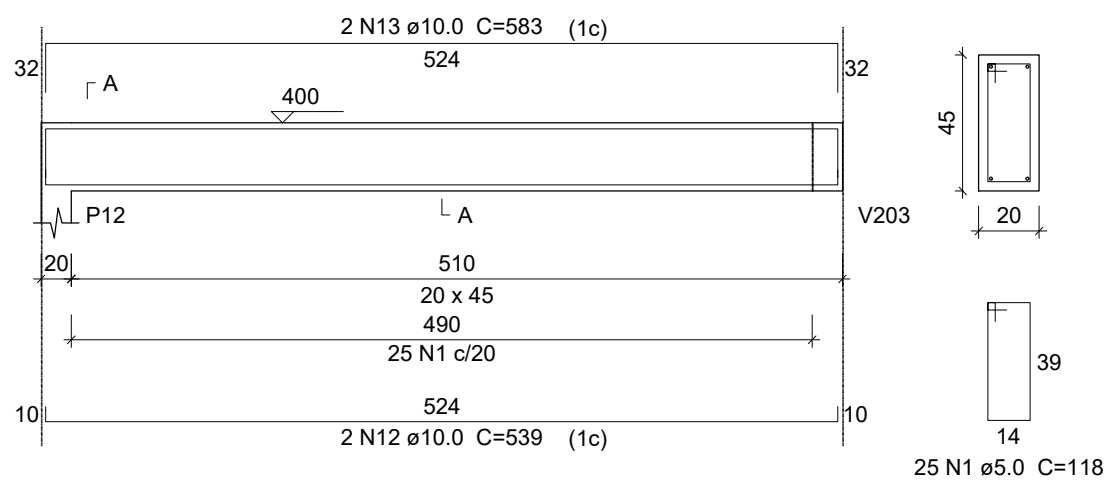
V213
ESC 1:50



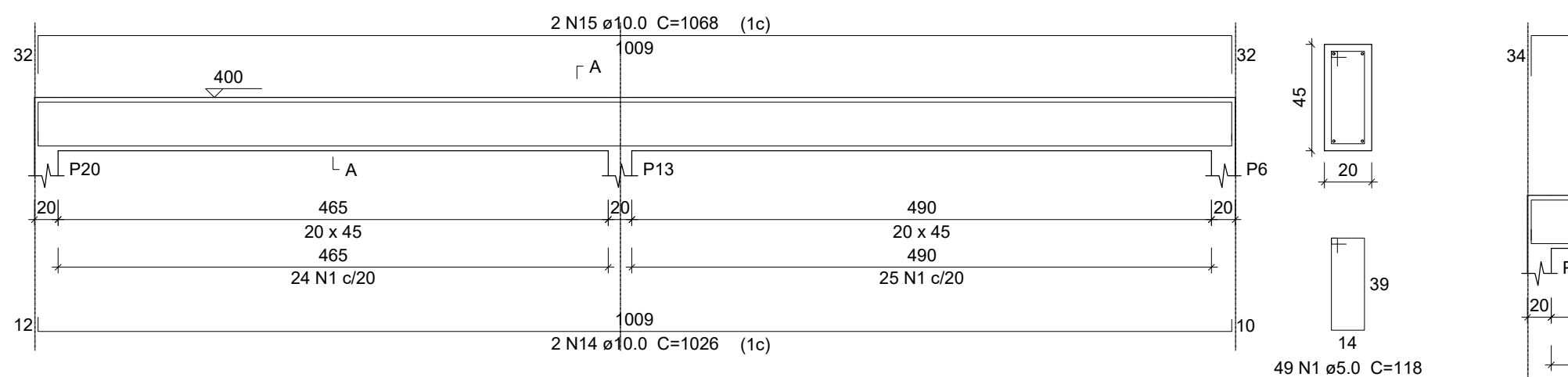
V214
ESC 1:50



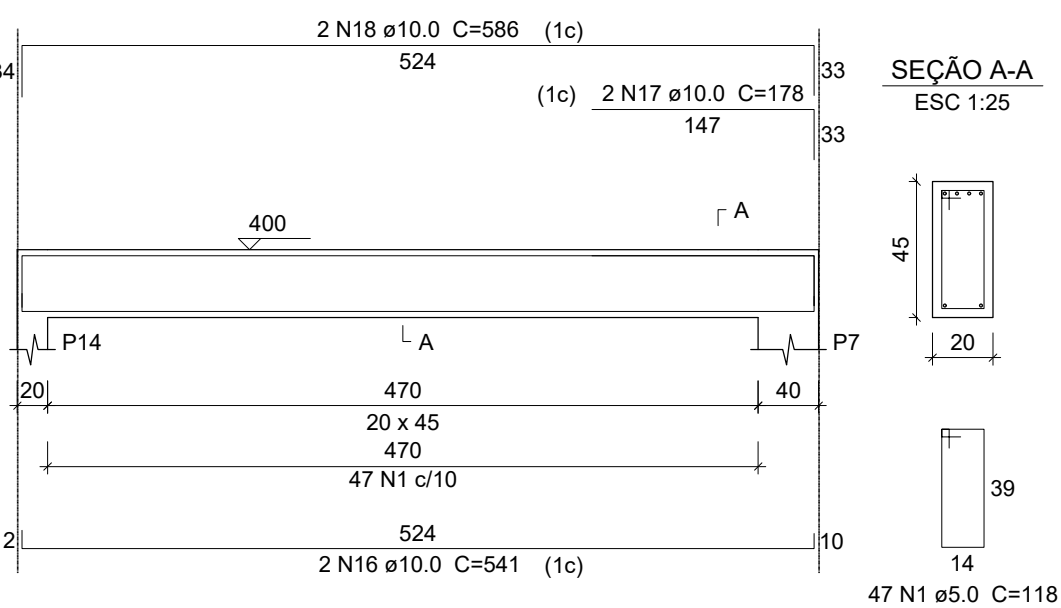
V215
ESC 1:50



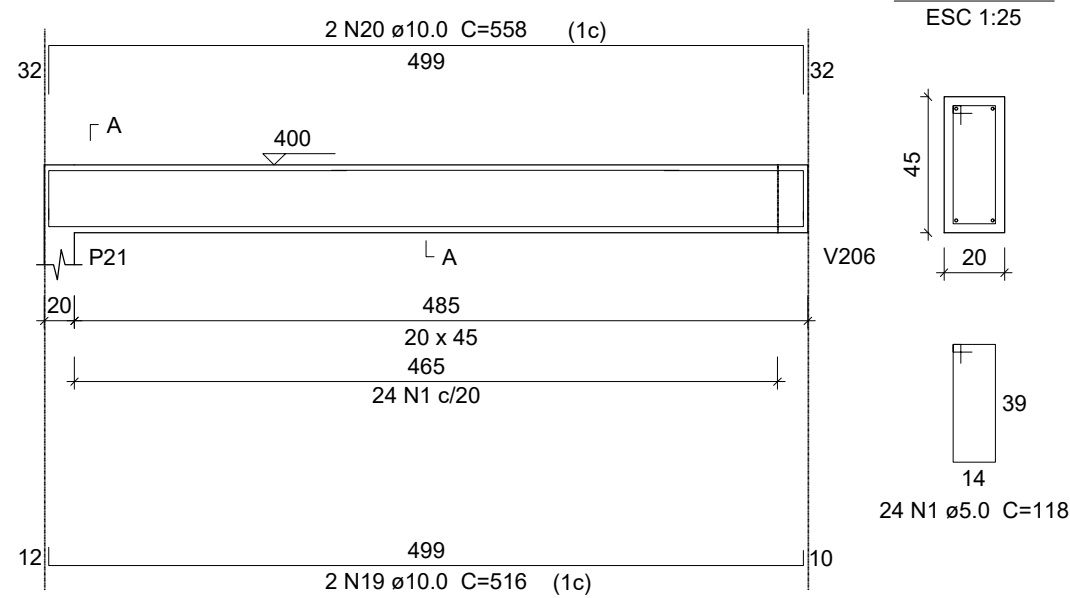
V216
ESC 1:50



V217
ESC 1:50



V218
ESC 1:50



Relação do aço

AÇO	N	DIAM (mm)	QUANT	C.UNIT (cm)	C.TOTAL (cm)
CA60	1	5.0	317	118	37406
CA50	2	10.0	2	1144	2288
	3	10.0	1	175	175
	4	10.0	1	177	177
	5	10.0	2	1193	2386
	6	10.0	4	659	2636
	7	10.0	4	703	2812
	8	10.0	2	1146	2292
	9	10.0	2	1189	2378
	10	10.0	2	149	298
	11	10.0	2	200	400
	12	10.0	2	539	1078
	13	10.0	2	583	1166
	14	10.0	2	1026	2052
	15	10.0	2	1068	2136
	16	10.0	2	541	1082
	17	10.0	2	178	356
	18	10.0	2	586	1172
	19	10.0	2	516	1032
	20	10.0	2	558	1116

Resumo do aço

AÇO	DIAM (mm)	C. TOTAL (m)	PESO + 5 % (kg)
CA50	10.0	270.4	175
CA60	5.0	374.1	60.5
PESO TOTAL (kg)			
CA50			175
CA60			60.5

Volume de concreto (C-25) = 5.66 m³
Área de forma = 69.19 m²

GOVERNO MUNICIPAL DE
TRÊS PALMEIRAS

SECRETARIA DE OBRAS E INFRAESTRUTURA
SETOR DE ARQUITETURA E ENGENHARIA

ENDEREÇO: PRAÇA, 12 DE MAIO, 763 - CENTRO - TRÊS PALMEIRAS - R/S
TELEFONE: (54) 3367-1040 / 1030
CEP: 99675-000
EMAIL: engenharia@rs.gov.br



OBRA:
CENTRO DE RECREAÇÃO MUNICIPAL
CAMPO GUARANI -CENTRO - TRÊS PALMEIRAS R/S

ESPECIFICAÇÃO:
PROJETO ESTRUTURAL

RESPOSAVEL TÉCNICO:

Paula Roberta Castamann
Engenheira civil
CREA - RS 180.440

PROPONENTE:

Silvânio Antônio Dias
Prefeito Municipal

DESENHO:
Paula Castamann

DATA:
DEZEMBRO DE 2018

PRANCHA:

06/06

ÁREA:
334,63m²

ESCALA:
INDICADA